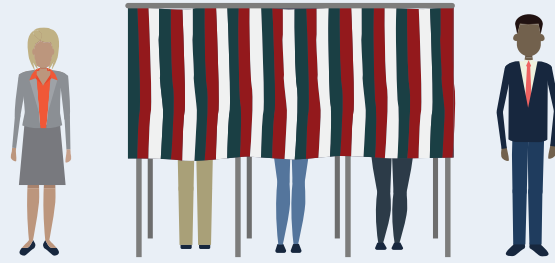


## Election Workers

Almost all processes and procedures require that two or more trained personnel be involved.



These officials have taken an oath to uphold state election laws and protect the security of the election.



Representatives of political parties or candidates, and sometimes even members of the general public, are allowed to observe and monitor election activities.



## Contingency Planning

If something does happen on or near Election Day, Cook County has back-up plans in place to make sure voters can still cast their ballots.

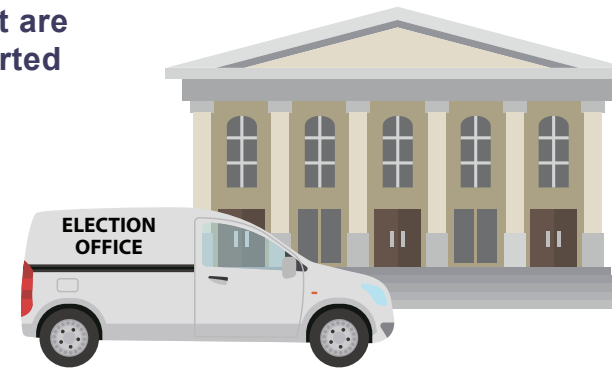


## Election Night Reporting

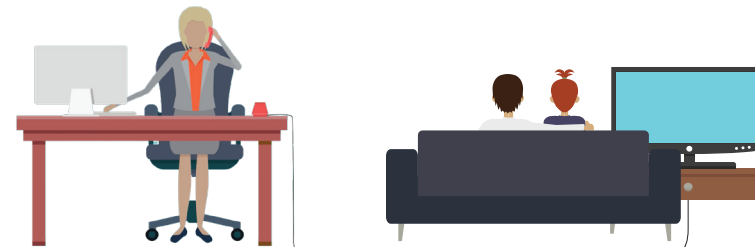
When the polls close on election night, election personnel collect vote counts from each machine and report results to election headquarters.



Ballots and equipment are then securely transported back to election headquarters.



Although we may know who won an election within a few hours, results are not official until the vote is certified by the election office.



Cook County maintains all records for audit or recount for a set period as per the State of Illinois' requirements.



# Election Security

*Have you ever wondered  
how elections are secured  
in Cook County?*



[eac.gov](http://eac.gov)



[cookcountyclerk.com](http://cookcountyclerk.com)

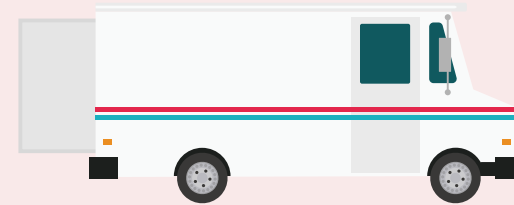
# Voter Registration



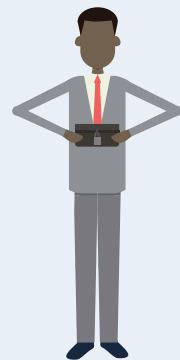
Voter registration ensures only those meeting state eligibility requirements are able to vote, and helps keep track of who has cast a ballot.

# Mail Ballots

Vote by mail ballots are protected by state rules and procedures that determine how they must be handled.



Mailed envelopes must be signed so that signature can be compared to the signature on the voter's registration form.



Only authorized personnel have access



All database traffic is monitored



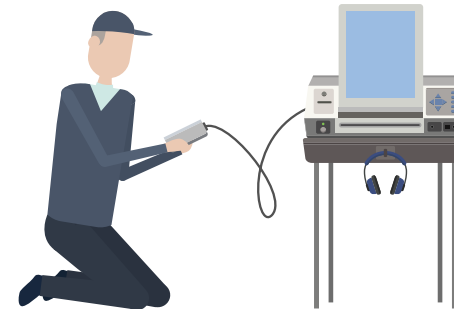
Routine backups



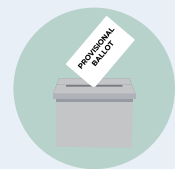
Personal information is only released in accordance with a state's legal guidelines.

# Election Equipment

Each piece of voting equipment is put through logic and accuracy tests to make sure ballots will be counted correctly.

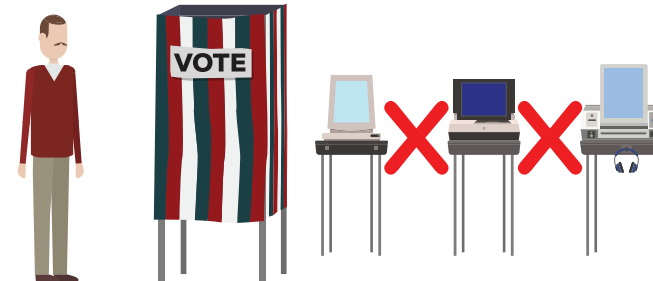


Ballots and election equipment are secured with tamper-evident seals and transported to polling places in secure containers.

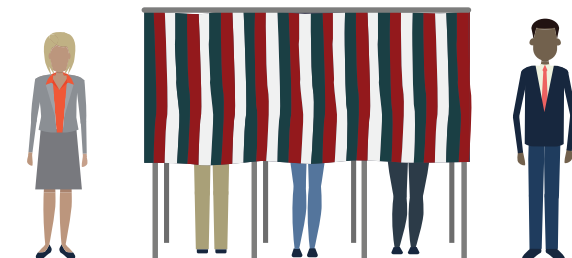


Voters who do not appear on the registration list or do not have the required form of ID, can cast a provisional ballot.

Cook County has adopted policies that forbid voting machines from connecting to the internet.



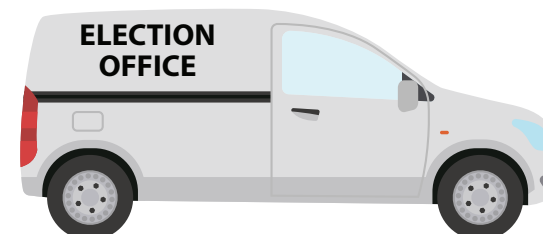
While election materials are in use, they are closely watched by election workers trained to notice and respond to any suspicious behavior.



# Decentralized Structure

U.S. elections are conducted independently across thousands of local jurisdictions, each following unique laws and statutes, which means there's no single point of access.

Each time election materials and equipment switch hands, it has to be documented.



When it isn't being used, voting equipment is stored in a facility accessible only to trained election personnel.

